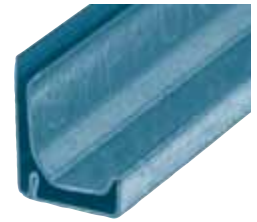
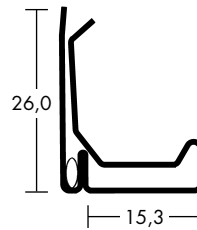


1.1 MEZ-SYPHON-FLANGE®

1.1.1 MEZ-SYPHON-FLANGE SYSTEM 20

Complies to all requirements under DIN 24194 / part 1

- Higher degree of tightness through an integrated siphon
- 128 S with injected sealing compound (sealant)
- Profile length: 5000 mm



Art.-Nr	Material	Material thickness/mm	Moment of inertia/cm ⁴	VPE m	Weight kg/m
128	Galvanised steel	0,70	0,287	500	0,520
128 S	Galvanised steel	0,70	0,287	500	0,520
128 E	Stainless steel	0,70	0,287	500	0,520

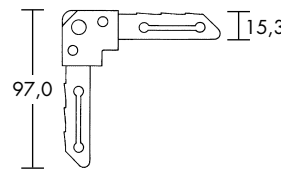
Workmanship Guidelines:

Maximum edge length (mm)		
500 PA	1000 PA	2500 PA
1000 mm	800 mm	600 mm

- The duct grooved seams do not need to be notched up
- For details on frame production see technical features

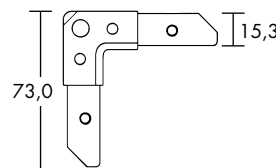
MEZ-CORNER

- Corner to be attached to the duct wall
- Sealing of the corners done on the inside of the air duct wall



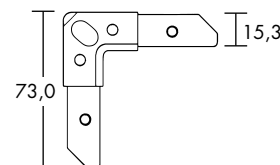
Art.-Nr	Material	Material thickness/mm	Screw hole mm	Deduction mass mm	VPE units	Weight kg/piece
228	Galvanised steel	3,00	9	30	500	0,054

- Corner to be inserted into the duct wall
- Sealing done on the front side of duct and on the inside board of the angled corner



Art.-Nr	Material	Material thickness/mm	Screw hole mm	Deduction mass mm	VPE units	Weight kg/piece
229	Galvanised steel	3,00	9	30	500	0,040

- Corner with elongated hole to be inserted into the duct wall
- Sealing done on the front side of duct and on the inside board of the angled corner



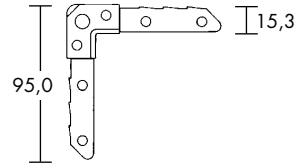
Art.-Nr	Material	Material thickness/mm	Screw hole mm	Deduction mass mm	VPE units	Weight kg/piece
229/2	Galvanised steel	3,00	9 x 12	30	500	0,040



1.1.1 MEZ-SYPHON-FLANGE SYSTEM 20

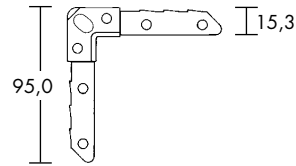
MEZ-CORNER

- Corner to be inserted into the duct wall
- Sealing done on the front side of duct and on the inside board of the angled corner



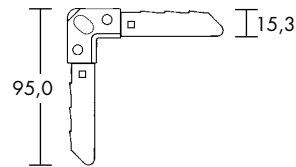
Art.-Nr	Material	Material thickness/mm	Screw hole mm	Deduction mass mm	VPE units	Weight kg/piece
229/1	Galvanised steel	3,00	9	30	500	0,052
229/1E	Stainless steel	3,00	9	30	500	0,052

- Corner with elongated hole to be inserted into the duct wall
- Sealing done on the front side of duct and on the inside board of the angled corner



Art.-Nr	Material	Material thickness/mm	Screw hole mm	Deduction mass mm	VPE units	Weight kg/piece
229/3	Galvanised steel	3,00	9 x 12	30	500	0,052

- Corner with elongated hole and drive in groove
- Corner to be inserted into the duct wall
- Sealing done on the front side of duct, and on the inside board of the angled corner



Art.-Nr	Material	Material thickness/mm	Screw hole mm	Deduction mass mm	VPE units	Weight kg/piece
229/4	Galvanised steel	3,00	9 x 12	30	500	0,052

